

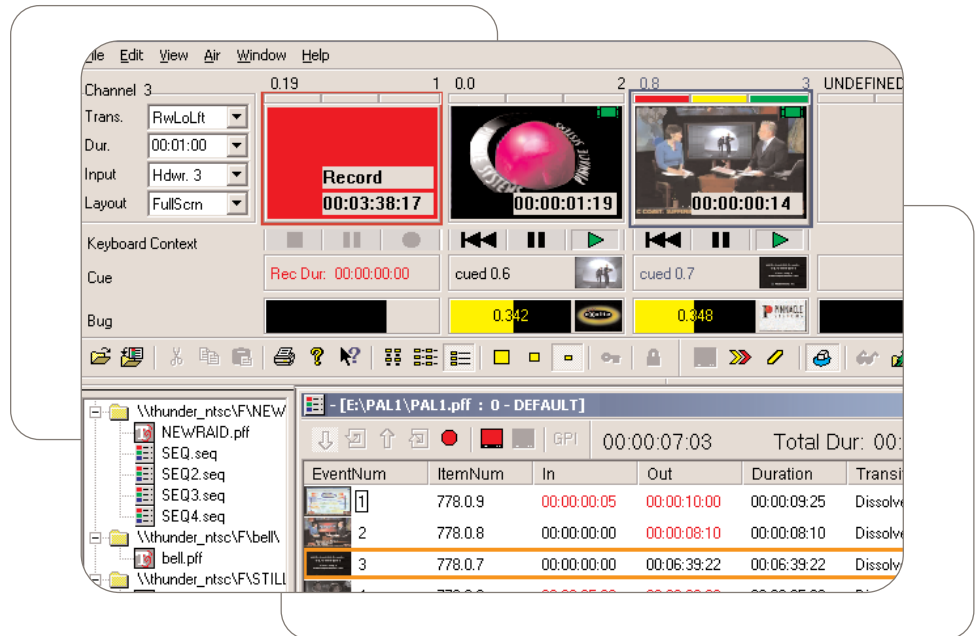


ThunderMX



Key Features

- Import/export of standard file formats, including MXF, sequential TGA/TIFF with alpha, and QuickTime® movie files
- One to three record/playback channels – each with still and key, or video, key and audio with clip option
- Front-accessible redundant storage and dual hot-swappable power supplies
- Downstream keyer per channel
- Clips and stills with key in a single platform and single user interface (with clip option)
- Integrated database with robust metadata searching for asset management
- Integrated network browsing
- Supports commonly used automation protocols
- Support for MPEG-2 and DV compression for maximum flexibility
- Real-time transitions between clips and/or stills
- On-air playback sequencer per channel
- Full MOS compliance for seamless Newsroom Computer System integration
- Built-in ODBC allows simultaneous search of multiple databases



ThunderMX

Pinnacle ThunderMX is the next generation of Pinnacle Systems' live production server platform. Based on the Inflexion engine with the familiar and powerful Thunder application user interface, ThunderMX delivers an enormous range of live production capability.

Available as a still store or with a clip option, ThunderMX serves video and key on each of its one, two, or three channels. ThunderMX utilizes front-accessible redundant storage and dual hot-swappable power supplies, all at a lower cost.

The Inflexion engine provides powerful support for MXF in addition to the numerous video formats that Thunder already supports. ThunderMX easily integrates with Pinnacle Deko and Pinnacle Liquid, or other MXF-based broadcast devices, easily sharing content and speeding operations in your fast-paced live production workflow.



Technical Specifications

Supported Video Standards

- NTSC and PAL Video Standards
- 4:3 and 16:9 (anamorphic) Aspect Ratio

Video I/O per Channel

- SDI Video and Key Input per Channel – SMPTE 259M Compliant
- Automatic Retiming of Synchronous Inputs
- SDI Video and Key Output per Channel - SMPTE 259M Compliant
- Standard 8-Bit, 4:2:2:4 Sampling

Clip Support (optional)

- MPEG-2 I-Frame 4:2:2, 4:2:0, or IBP 4:2:0 Sampling, Variable Bit Rate (2-50 Mb), (.MXF File Format)
- DV25 Standard Compression Format (.DV File Format)
- DV25 Standard Compression Format (.AVI File Format) - playback only

Supported File Formats

- Stills: All common graphic file formats, including .tga, .tif, .psd, .g, .dco, .vpb
- Clips (optional): QuickTime movie files, .dv, .tmf, .avi, .mp2+, .wav, and sequential .tga or .tiff files

Audio I/O per Channel

- Four Channels of Audio Input – Embedded in SDI Video Input
- Four Channels of Audio Output – Embedded in SDI Video Output
- Standard 16-Bit, 48 KHz Sampling

Reference

- Analog Color Black – 75 ohm terminated

Downstream Keyer

- 8-Bit Video Resolution
- Four Frame Processing Delay through Box

Automation Control

- Four RS-422 Ports
- VDCP (Louth/Harris), Odetics, MOS, PbusII, ThunderNet, BVW-75 Protocols
- Eight GPI Inputs
- Eight GPI Outputs

Standard Specifications

- Platform: 2.8 GHz Intel Pentium IV (or faster)
- Operating System: Windows XP Professional
- RAM: 1 GB
- Internal Storage: 320 GB or greater
- Storage: DVD+R/+RW Writer
- Keyboard: Standard Keyboard
- Mouse: Microsoft® Compatible Mouse
- Ethernet: Gigabit
- Ports: One Serial RS-232 (DB9), Four USB 2.0 (Two Front, Two Rear)

Physical Dimensions

- 4RU Rack Mount Chassis
- Height: 7" (17.78 cm)
- Width: 19" (48.26 cm)
- Depth: 22" (55.88 cm)

Power Specifications

- Redundant Hot-Swappable Power Supplies
- 110/220 Volt 60/50 Hz (Auto-sensing)
- AC Line Current = 6 A
- 400 Watt Maximum Output

